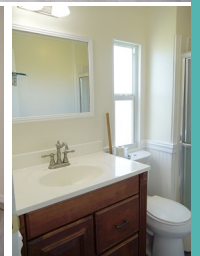


440 Pinelake Village Blvd

For
SALE

Home size: 24' x 44'
Square Feet: 1,056
Porch/Extra S/F: 240
Year: 1980
Bedrooms: 2
Bathrooms: 2
Furnished: Furnished
Flooring: Laminate Plank
Laundry: In shed
Applianc/Equip: Refridge., range, dishwasher, micro, washer & dryer
Lot Desc: Corner
Lot Size: 6,090 S/F
Irrigation Well: Yes
Assoc Fee (Optional): \$10.00/yr
Monthly Lot Rent: \$724.00
(includes cable, garbage, & amenities)

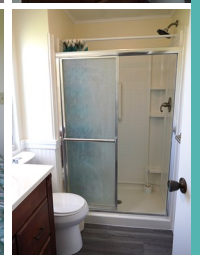
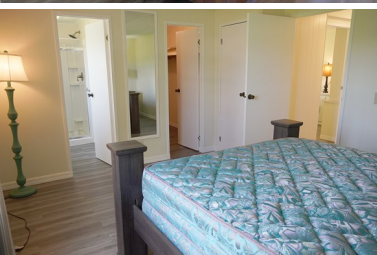


Pinelake Village

A 55+ Manufactured Housing Community



- Large corner lot with mature tropical landscape. Freshly painted exterior!
- Large Florida room off of the living room.
- New kitchen with beautiful grey cabinetry. Stainless steel appliances are 5 years old
- Subfloor replaced with 3/4" plywood . A.C. new in 2022
- Updated master bath and hot water heater is new!



www.PinelakeVillage.com

Please call to arrange a private viewing **Vicki Mattucci, Sales Agent** 772-201-2685 cell or 772-334-1414 office

